

Wind Towers Manufacturer

www.socomenin.com.tr

SOCOMENIN PRESENTATION

SOCOMENIN is an Engineering, Industrial Construction and Maintenance Company. Its Head quarter is located in Sfax (Tunisia) together with steel fabrication plants, blasting and painting facilities and a machine tools workshop.

SOCOMENIN was founded in 1975, and succeeded in establishing excellent relationships with many local and international well known companies.

Today, SOCOMENIN is one of the leading companies in steel fabrication, industrial construction and maintenance activities in the Mediterranean sea region.



WIND
TOWERS
DIVISION

WIND TOWERS DIVISION

SOCOMENIN Wind Towers Division is specialized in the fabrication of tubular steel towers for the wind power industry.

Our plant is located 200 meters away from SFAX port making sea transportation easy and cost effective and the total area of our plants and storage zone is 85 000 m².

In our plant fully dedicated to serial production of wind towers, we can manufacture towers up to 6000 mm in diameter.

Towers are delivered surface treated including assembly of internals.

Among quality control equipment we are using a highly sophisticated Laser Tracker to ensure tolerance requested by our customers.



MANUFACTURING PLANTS



Total area

85 000 m²

Covered area

35 000 m²

Production capacity

25 000 T/ Year

Lifting capacity

120 T

Max height under hook

13 m

Automatic welding machines up to

7m x 7m

Max rolling capacity

60 mm



WIND
TOWERS
DIVISION

SURFACE TREATMENT

In order to keep-up with new technologies, and to improve the quality if its products, SOCOMENIN has established two new blasting booths using metallic grit with 280 000 m²/year capacity.

The two blasting booths are built according to international standards specifications for on-shore and off-shore use.



GRIT BLASTING



THERMAL SPRAYING

The painting activity is done in 5 air conditioned buildings according to international standards and paint manufacturer's specifications for onshore and offshore use. Specific conditions, such as humidity and temperature are controlled.

Buildings are equipped with air heaters generators to allow our company to improve its productivity and quality of painting process.



PAINTING

QUALITY CERTIFICATION

SOCOMENIN has been committed to meeting the highest quality standards and demonstrating high levels of skill since it was founded.

SOCOMENIN applies a quality management system for Project management, Engineering, manufacturing of wind towers, pressure vessels, storage tanks, machined-welded items, piping and steel structure, turnkey industrial project realization according to ISO 9001:2008 by TÜV.



We are also certified ISO-3834-2 for wind towers manufacturing and registered in Servizio Tecno Centrale in ITALY under N° 654/10.

SOCOMENIN's Quality Control System is accredited **CE** according to ASME Section 8 division 1 & 2/ EN 13445/ PD 5500.

SOCOMENIN holds the U, U2, S and R stamps for manufacturing and for repair of pressure vessels, power boilers, and piping.

These certificates are an important part of R&D task and a part of a strategic planning aiming to hoist the company in the row of the best manufacturers in these fields.



ASME International



WIND
TOWERS
DIVISION

INSPECTION

SOCOMENIN give a great importance to the quality of its products, therefore, the inspection is done along the different steps of manufacturing, from the reception of raw materials up to the finished product.

The inspection is ensured by highly qualified engineers and technicians.

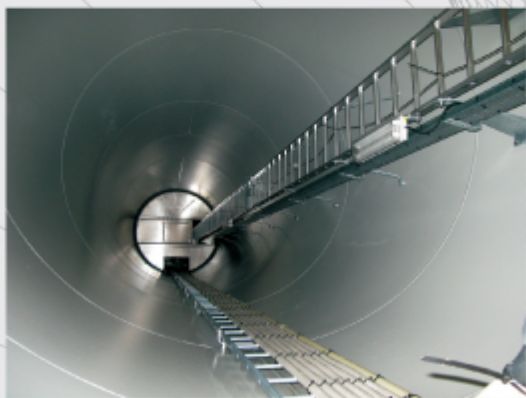
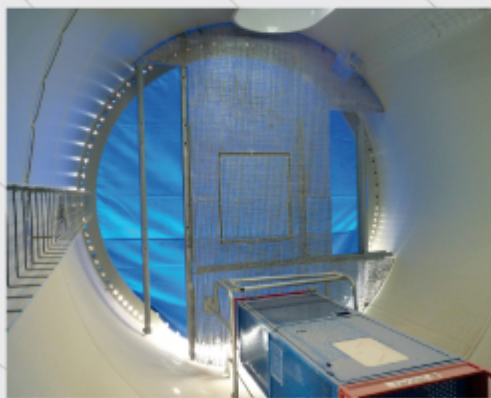


Inspection techniques:

- The NDT methods performed by the NDT department are:
 - TOFD (Time Of Flight Diffraction)
 - UT (Ultrasonic Testing)
 - MT (Magnetic Testing)
 - PT (Liquid Penetrant Testing)
 - RT (Radiographic Testing) Films Interpretations
 - Laser Measurement



INTERNALS ASSEMBLING



Erection of internals :Lifts, Power cables, Ladders, Platforms...



WIND
TOWERS
DIVISION

STORAGE AREA

45 000 m² of storage area
at 200m from port entrance



EXPORT



Our plants are located 200 meters away from Sfax Port making sea transportation easy and cost effective



WIND
TOWERS
DIVISION

Customer Satisfaction Objectives

We are committed to delivering high quality products and services, on time, and at the lowest possible cost, to the delight and satisfaction of our customers.

In order to achieve these objectives, we will :

» Assure that there is a clear understanding of the customers' needs and expectations.

» Adopt a quality-in-all-we-do philosophy and recognize each employee's responsibility for quality.

» Work to defined policies, procedures, and processes with an emphasis on continuous process improvement through individual and group contributions; customer, user, and subcontractor inputs; and process and product measurements.

» Perform timely and effective corrective and preventive actions on identified or potential problems throughout the business.

» Work with our suppliers and subcontractors to assure their products/services meet the same high standards that we set for ourselves.

» Strive to continuously improve the cost effectiveness of all our functions and processes.



Gamesa

LEITWIND



WIND
TOWERS
DIVISION





www.socomenin.com.tn

Contact :

Avenue Mohamed Hédi Khefacha 3000 Sfax- Tunisia

Phone: (+216) 74 498 162 - 74 101 100

Fax : (+216) 74 497 726 - 74 497 438

E-mail: marketing@socomenin.com.tn

industrial@socomenin.com.tn