



SOCOMENIN

Engineering, Manufacturing and Industrial Construction



CONTENTS

General Presentation

- P2. CEO Message
- P3. Overview
- P4. Company Structure
- P5. History
- P5. Location / References
- P7. Quality Management
- P8. HSE

Manufacturing Division: Work plants

- P11. Heavy steel equipment
- P13. Pressure vessel
- P14. Skid mounted units
- P15. Wind towers
- P16. Pipe work
- P17. Structural steelwork
- P19. Quality control, inspection and testing
- P21. Surface treatment
- P23. Logistics

Construction Division

- P27. Construction projects
- P29. Engineering
- P30. Procurement
- P31. Construction & Project management

References

- P33. Oil & Gas and Petrochemical
- P39. Energy
- P43. Renewable energy
- P45. Water industry
- P51. Chemical & mineral industries
- P53. Iron & Steel industry
- P54. Customer satisfaction objectives

SOCOMENIN @
www.socomenin.com.tn
SOC_MD_R03_07_14



CEO Message

We have always firmly believed that our success depends on the success of our customers. That's why SOCOMENIN continues to set the industry standard for quality and service excellence, and why we are relentless in our pursuit of growth and innovation: Our on-going commitment to provide our customers with the best equipment and solutions available, both now and for the future.

As always, great care is taken in the selection, processing, handling and delivery of our products in order to meet local and international regulations, and – just as important – to continue to meet only the highest standards for quality and consistency. We give you our best, so that you can do your best.

To accomplish our mission, we have established an alliance with our employees, customers, and suppliers to provide unique products and services that meet our customers' requirements.

As a matter of fact, I would like to take this opportunity to pledge that SOCOMENIN team will endeavor to devote full efforts to exceed our customers' expectations & fully satisfy their needs and requirements.

" Optimal results, it's much more than a slogan: It's a commitment. Our history proves it; our future is built on it."

Nasr Fersi
President & CEO

Overview

Since 1975, SOCOMENIN has been involved in the field of steel equipment manufacturing and construction of industrial plants on an EPC basis .

SOCOMENIN activities have always focused on customer satisfaction and constant improvement of products and services quality.



SOCOMENIN Head Offices

SOCOMENIN is doing business with national as well as international Customers, all leaders in their fields mainly:

- Oil & Gas and Petrochemical
- Energy
- Iron & Steel industry
- Water industry
- Chemical & mineral industries
- Renewable Energies



Company Structure

SOCOMENIN has two main divisions : Manufacturing and Construction.

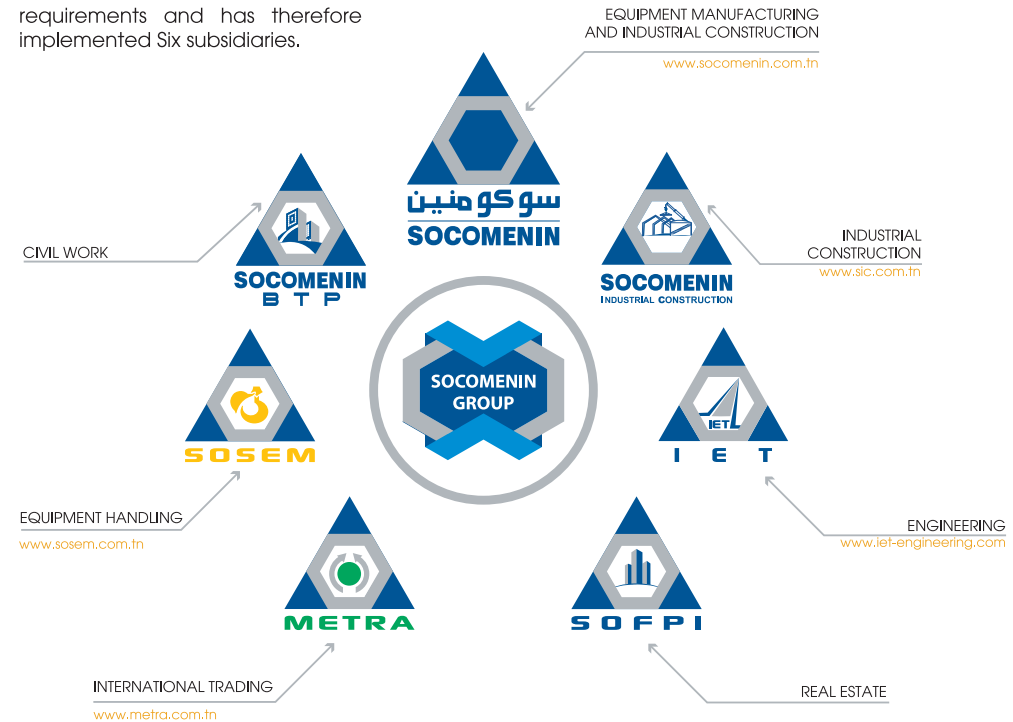
MANUFACTURING DIVISION

- Pressure vessels: Columns, Separators....
- Steel Structure
- Pipe racks , manifolds and piping
- Storage tanks
- Wind towers

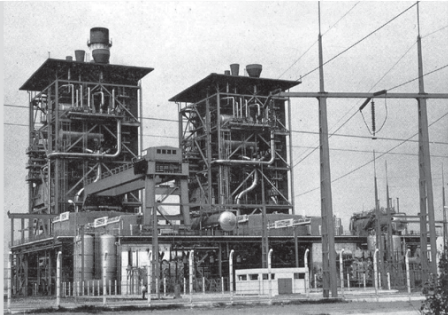
CONSTRUCTION DIVISION

- Turnkey projects
- Industrial plant installation
- Overhauling & maintenance of industrial plants

SOCOMENIN has developed its activities to meet its customer's requirements and has therefore implemented Six subsidiaries.



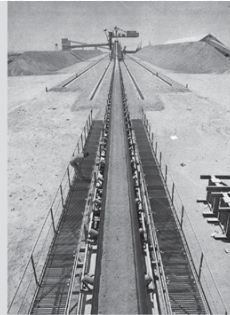
History



Sousse thermal power plant (1980)



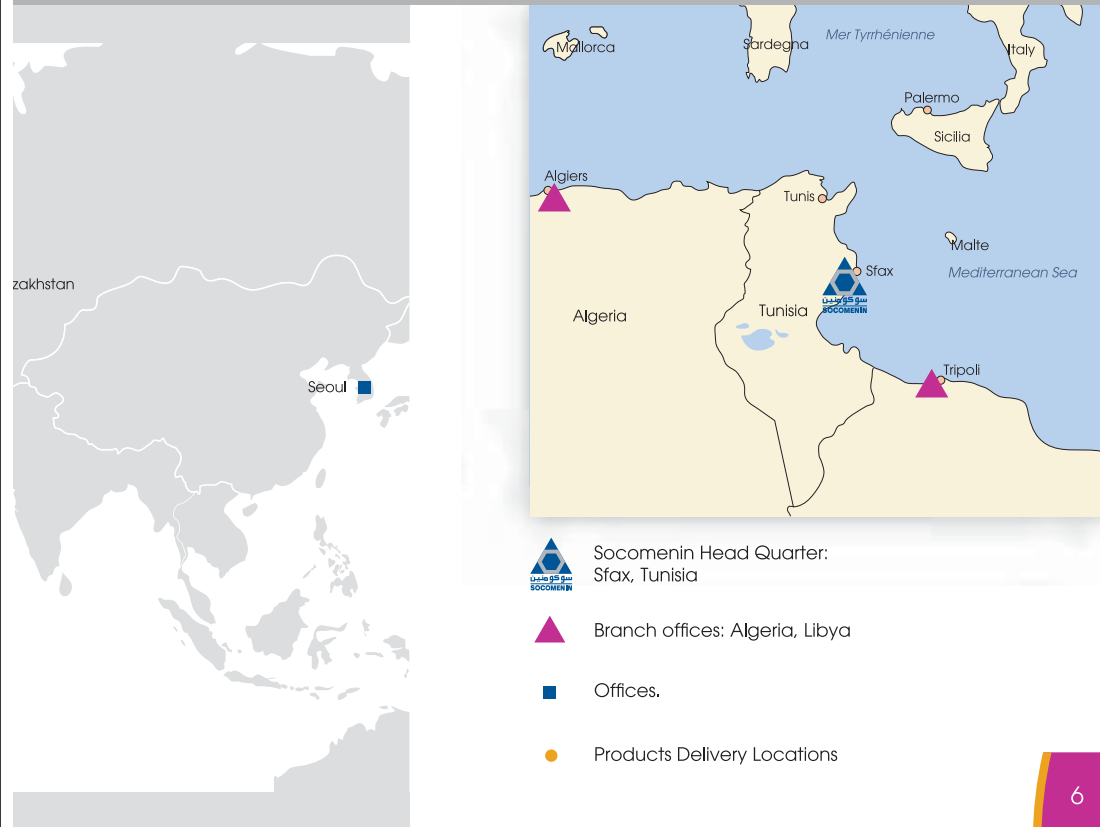
Engineering department (1979)







CPG Kaf Chfair (1978)

- > **1975:** Establishment of SOCOMENIN Company with a capacity of 300 T/Year
- > **1980:** Workshop extension to reach 3 000 T/Year
- > **1984 - 1988:** Development of international activities: Dubai (UAE), Libya
- > **1994:** Start of EPC projects
- > **2003:** SOCOMENIN obtained the ASME Stamp for the fabrication of pressure vessels
- > **2006:** Start of wind towers fabrication
- > **1999 - 2009:** Workshop extensions to reach 25 000 T/Year
- > **2010:** SOCOMENIN improved the structural steel fabrication facilities with integration of CNC unit and obtained CE Marking as per PED
- > **2014:** SOCOMENIN Obtained the certificate of Conformity of the factory production control according EN 1090.

Location / References



-  Socomenin Head Quarter: Sfax, Tunisia
-  Branch offices: Algeria, Libya
-  Offices.
-  Products Delivery Locations

ISO 9001:2008

SOCOMENIN has established, applies and is continually improving a Quality Management System as per ISO 9001:2008.

The Quality System scope covers all the activities which include project management, engineering, manufacturing and pressure vessels installation, storage tanks, wind towers, machine-welded items, piping and steel structure, turnkey industrial project realization and so on.



ASME "U" "U2" "S" & "R" stamps

In order to build and sustain the mutual trust with its customers, SOCOMENIN has implemented Quality Systems that focus on its technical products conformity to the International Standards. In fact, SOCOMENIN holds ASME BPV "U", "U2", "S" and "R" stamps and is certified to supply CE marked pressure vessels according to PED.



SAFETY FIRST!

Safety and environmental performance will continue to be SOCOMENIN major priority as we go forward. The health, safety and well-being of our staff are our first priorities. It is our mission to foster health and healing for the people and communities we serve.

SOCOMENIN is thus dedicated to providing a safe and healthful workplace with responsible environmental practices essential to the success of our business.

SOCOMENIN HSE policy is making sure to:

- Provide adequate control of the health and safety risks arising from our work activities;
- Consult with our employees on matters affecting their health and safety;
- Provide and maintain safe plant and equipment;
- Ensure safe handling and use of substances;
- Provide information, instruction and supervision for employees;
- Ensure all employees are competent to do their tasks, and to give them adequate training;
- Prevent accidents and cases of work-related ill health; and
- Maintain safe and healthy working conditions.





Manufacturing Division

SOCOMENIN is one of the leading steel equipment manufacturing companies in North Africa.

SOCOMENIN is specialized in the following products:

- Pressure vessels: Columns, Separators, Heat Exchangers....*
- Storage tanks*
- Pipe racks , Manifolds and piping*
- Steel Structures*
- Wind towers*



Heavy steel equipment

Manufacturing Work plants



Platform for CSP

Key indicators

SOCOMENIN has developed its work plants capacities in order to meet its customers' requirements.

Production capacity	25 000 T/ Year
Lifting capacity	120 T
Height under hook	13 m
Automatic welding machines up to	8m x 8m
Rolling capacity	60 mm
Total area	90 000 m ²
Covered area	37 000 m ²

Our heavy equipment work plant is dedicated to the engineering, Procurement and manufacturing of various types of steel equipment including :

- Pressure vessels
- Columns
- Boilers & Heat exchangers
- Separators
- Wind towers
- Skid mounted packages
- Prefabricated storage tanks
- Manifolds & Ducts

SOCOMENIN has a large experience in manufacturing various equipment made by Cr/Mo alloyed steels, Stainless steels including Duplex grades, Copper nickel, Zecor...



Flash chamber with Alloy 28



Special fittings



Wind towers

Pressure vessels



SOCOMENIN manufactures a wide range of pressure vessels, each built to fulfill code and client specific requirements for both onshore and offshore exploitation.

Our pressure vessel products include:

- Process Columns
- Fuel Gas Filters
- Gas Scrubbers
- Slug Catchers
- LP and HP Knock Out Drums
- High Pressure Separators
- Surge & Filter Vessels
- Reactors
- Boiler parts

The above mentioned products can be supplied with U, U2, S and R as applicable or marked CE to meet PED requirements.

CE S U U2 R NB



Skid mounted units

SOCOMENIN has proven skill to design and manufacture full turnkey skid mounted systems for processing plants (Oil & gas, fertilizers, petrochemicals...)



3-phases separators



Heavy steel equipment

Manufacturing Work plants

Wind towers

SOCOMENIN Wind Towers Division is specialized in the fabrication of tubular steel towers for the wind energy industry.

In our plant dedicated to serial production of wind towers, we can produce 12000 t/year of wind towers and this up to 6000 mm in diameter with high accuracy geometric tolerances.

Towers are delivered as a package surface treated including assembly of internals.



Pipework

Manufacturing Work plants

SOCOMENIN has a highly experienced team of pipefitters and qualified welders, which allows SOCOMENIN to offer a high quality pipework prefabrication services.



Structural steelwork

Manufacturing Work plants



CNC drilling, cutting and marking unit

SOCOMENIN Structural steelwork plant is equipped with CNC drilling, cutting and marking unit with a capacity up to 1000mm in width and with a total capacity of production up to 8000T / Year.

Erection on site



Painting shops



Assembly lines



SOCOMENIN is fully compliant with International Standards and specifications such as:

- **AISC codes and standards**
- **AWS D1.1/ D1.5**
- **DTU**
- **NORSOK M101**
- **EEMUA 158**
- **EEMUA 197**



Structural steel work for Rouis power plant



Packing

Quality certificates



SOCOMENIN has very strictly ensured that only conform products are delivered to its customers. SOCOMENIN's Quality Department performs in-house inspection and testing of all products along the manufacturing processes starting from the reception of raw materials up to the finished product.

SOCOMENIN considers that each order is a specific project for which a Quality inspector team is assigned and a Quality plan is systematically prepared.



Quality inspectors are qualified and certified as appropriate for specialties covering our scope as follows :

- CSWIP 3.1 Welding inspector
- ACCP CP-189 Level 2 NDT inspectors for UT, MT and PT methods
- NACE Coating Inspector CIP Level 2
- ACQPA/FROSIO Inspector

The Testing performed in-house are:

1) NDT methods:

- Automated Time Of Flight Diffraction / Phased Arrays (TOFD / PA)
- Conventional Ultrasonic Testing (UT)
- Magnetic particle Testing (MT)
- Liquid Dye Penetrant Testing (PT)
- Laser Tracker (3 D Laser Measuring)
- Hardness test
- Positive Material Identification (PMI)
- Ferrite test

2) Pneumatic leak test and Hydrostatic test

3) Coating inspection:

- Hygrometric condition monitoring
- Roughness testing
- Surface profile measuring
- Bresle test
- Chloride test
- Dry film thickness measuring
- Adhesion test (Pull-off)
- Holiday test
- Hardness test
- Brightness test



Phased Arrays (TOFD / PA)



Laser Tracker (3 D Laser Measuring)

Surface treatment

Manufacturing Work plants

**Blasting capacity
300 000 m²/year**

In order to keep-up to date with the new technologies, and to improve its products quality, SOCOMENIN Company has established three new blasting shops using metallic grit with 300 000 m²/year capacity.



Shot Blasting



Thermal spraying

The three blasting shops are built according to international standard specifications for on-shore and off-shore use, and respecting the specific conditions of both humidity which could be controlled and salinity that could be fixed down to 3µg/cm².

The painting activity is done in 6 conditioned buildings according to the international standards and paint manufacturer's specifications for onshore and offshore use. Specific conditions, such as humidity and temperature are closely controlled.

These buildings are equipped with air heater generators used in the winter.



Painting

RUBBER LINING ACTIVITY

SOCOMENIN provides customers with high quality services in the application of rubber lining for corrosion and abrasion protection required in chemical processing and water treatment equipments.



Storage

From the raw material arrival to the delivery of finished product, SOCOMENIN ensures the required logistical operations.



Raw material storage area 10 000 m²

With more than 10 000 m² of raw material storage area equipped with 03 gantries cranes and with more than 45 000 m² of finished product storage area located close to the SFAX harbor.

SOCOMENIN is able to ensure the storage of all our customers project-related goods.



Finished products storage area 45 000 m²

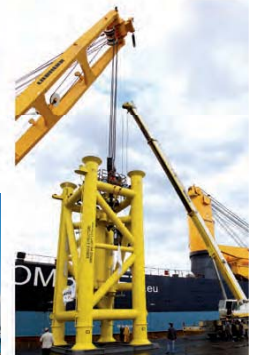
Export logistics

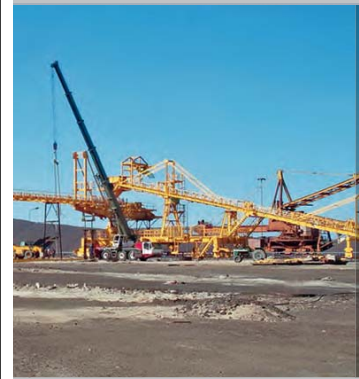
Packing, loading and delivery



In order to meet the European standards, we have operated as per ISPM 15 standards for any packing operation

SOCOMENIN ensures the transportation of goods either by conventional and non conventional sea shipment or by land using special low-bed and standard trucks.





Construction Division

Since its creation, SOCOMENIN was involved in large projects in North Africa. Its high level of expertise and project management and construction capabilities, combined with a responsive organizational structure and a policy of forging partnerships with local and international companies, has enabled SOCOMENIN to provide solutions that are both global and modular to meet the wide-ranging needs of customers, from project management to the provision of turnkey projects.



Construction projects

SOCOMENIN has a large experience in project construction in different field of activities from engineering to commissioning and start up.

Our main construction projects include:

- *Storage tanks*
- *Oil and Gas processing plants*
- *Separation Units*
- *Power Generation Plants*
- *Pumping stations*
- *Desalination Units*
- *Chemical processing plants*
- *Fertilizer plants*
- *Cement Factories*
- *Iron and steel plants*
- *Food Factories*



TIFERT - Phosphoric acid plant - Tunisia

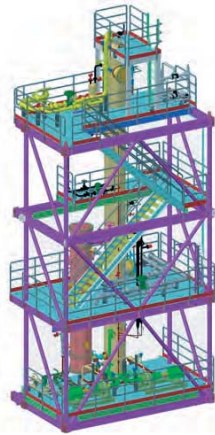
Engineering

SOCOMENIN offers Engineering and design services related to EPC Projects and Process equipment manufacturing covering:

- Basic Engineering: Mechanical, Electrical, Civil Engineering works...

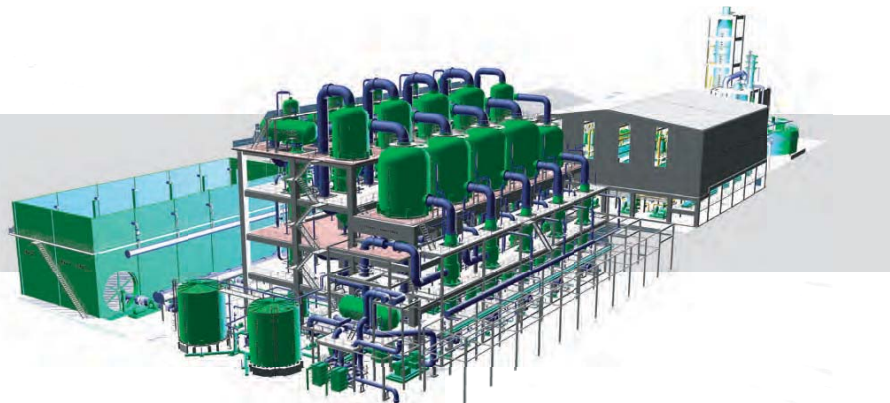
- Detailed engineering: Structural, Instrumentation, Mechanical, Piping layout...

SOCOMENIN is using CAD/CAE Design software packages that enable delivering high quality designs to customers.



Design tools:

Drawings: AutoCAD / SP3D / Solidworks
Pressure vessel Design Software: PV ELITE
Atmospheric Storage Tank Design: AME Tank
Steady State and transient Hydraulic analysis: WANDA
Piping Flexibility analysis and stress calculation: CAESAR II
Steel Structure and concrete steel Design Software: ROBO BAT
Steel Structure Detailed Design: X-STEEL
Process Design: HYSIS
Finite Element Analysis: COSMOSWORKS/COSMOSM



Procurement

The procurement department operates according to an ISO9001 - 2008 approved procurement manual, highlighting the following steps in chronological order: preparation of bidders list and RFQs, evaluations, negotiations, award and finally expedition and material control.



The procurement scope of services covers the following activities

Purchasing expertise:

Globally source material & equipment from proven manufacturers.

Expedition services:

Expedition delivery to ensure project is completed on schedule

Logistical operations:

Manage logistics of delivering material & equipment to site

Quality inspection surveillance

Project & Construction management

SOCOMENIN is specialized in project & construction management for Oil & Gas, Water, Chemical and Petrochemical plants...

SOCOMENIN provides project & construction management services for an entire project or tailored our services for specific portions of a project.

SOCOMENIN project management teams objective is to fulfill projects according to contractual specifications in time and within budget.



Skhira terminal Tank Farm
TANKMED - Tunisia

SOCOMENIN construction management teams are carefully selected according to the project scope. The company provides them with the necessary project tools and documentation to ensure success.

Our construction management teams are involved in every single stage of the project.



Phosphoric Acid plant
TIFERT - Tunisia

Project & construction management services

- Preliminary contracting & project management plan
- Change & risk management
- Cost estimating & value engineering
- Scheduling
- Quality assurance & integrity management
- Document control
- Project progress reporting procedures
- HSE activity coordination & site safety management
- Construction management
- Mechanical completion & Commissioning supervision

Safety first - Reliability - Quality - On time



Ruwais Power plant
GECOL - Libya



Project: Demolition using water-jet & cold-cutting tools of existing and reconstruction of new 500,000 USBBL Crude Oil Floating Roof Storage Tank (Diam:80 m / H:17m)

Main contractor: Socomenin

Owner: Harouge Oil Operations (Libya)

Year: 2012-2015



Project: EPC contract for Z5105 skid mounted stabilization package (decanter, Re-boiler (Heat exchanger) and column) for the Ashtart revamping project.

Main contractor: Socomenin

Owner: Sersept (Tunisia)

Year: 2011



Project: Supply and Fabrication of an offshore topside structure elements of a conductor supported platform (CSP) project.
Dimensions: H 15 m, L 12 m, W 6 m (Weight: 200T with Equipments)

Main contractor: Aquaterra Energy (UK)

Owner: Sapetro (Benin)

Year: 2013-2014



Project: Supply and Fabrication of an offshore subsea structure elements of a conductor supported platform (CSP) project.
Dimensions : H 14,3 m, L 6,5 m, W 5,5 m (Weight : 120T)

Main contractor: Aquaterra Energy (UK)

Owner: Sapetro (Benin)

Year: 2013-2014



Project: Design, Supply, Fabrication and Commissioning of a production separator package Z5103

Main contractor: Socomenin

Owner: Serept (Tunisia)

Year: 2010



Project: Supply and Fabrication of Steel Structure & one Separator Vessel

Main contractor: MG Group

Owner: Perenco (Congo)

Year: 2013



Project: Design, Supply and Fabrication of 6 separators and one degassing boot

Main contractor: Peerless Europe

Owner: Gulf Oil Company (Libya)

Year: 2008/2009



Project: Revamping of marine jetty and 28th March terminal in Tobruk.

Main contractor: Socomenin

Owner: Brega Petroleum Marketing co. (Libya)

Year: 1994-1996



Project: Prefabrication works and erection of a complete unit of gas oil separator (G.O. S.P.) 15000 B / Day At EL-MABRUK, and erection of 5 oil storage tank (5000 BBLS)

Main contractor: GEO Services

Owner: Total (Libya)

Year: 1995



Project: Engineering, Supply, Fabrication and Construction of 15 oil storage Tanks (284 000 m³) including manifold and interconnecting piping at Skhira terminal.

Main contractor: Socomenin

Owner: Tankmed Tankage Méditerranée sa. (Tunisia)

Year: 2007-2008 / 2011-2015



Project: Supply, Prefabrication and Delivery of Tubular Pipe racks for marin jetty at Wafa Costal plant (72 modules, 30T each, 2,1 Km length)

Main contractor: JTS Consortium (JGC / Technimont / Sofregaz) / Contractor: BESIX

Owner: Eni Gas (Libya)

Year: 2003



Project: Engineering, Fabrication and Supply of 18 Pressure Vessels ASME Stamped for Hasdrubal Gas Treatment Project.

Main contractor: Petrofac International LLC (UAE)

Owner: British Gas (Tunisia)

Year: 2007/2008



Project: Supply, Fabrication and Erection of 1800 Tons of steel Structure for Turbine buildings and auxiliary , 09 surges vessels and air intake system for Sousse D Power Plant

Main contractor: Ansaldo Energia

Owner: Steg (Tunisia)

Year: 2013 / 2014



Project: Supply, Fabrication and Delivery of 16 pressure vessel for Megalopolis CAPP - unit 5

Main contractor: Idreco S.P.A

Owner: J/V Metka S.A - Terna S.A

Year: 2012



Project: Prefabrication, Erection, Welding and Painting of 3150 Tons steel structure at Western Mountain Gas turbine power plant project at Ruwais.

Main contractor: Msec

Owner: Gecol (Libya)

Year: 2004/2005 - 2009/2010



Project: Supply, Fabrication and Delivery of Chimney for "la Goulette" power station.

Main contractor: GE International Inc

Owner: Steg (Tunisia)

Year: 2004



Project: Detailed design, Fabrication and Erection of steel structures for EZZAWYA gas turbine buildings (1200T)

Main contractor: Bilfinger & Berger

Owner: Gecal (Libya)

Year: 1998



Project: Design, Supply, Fabrication of: 2 fuel oil storage tanks (10 000 m³), 1 fire water storage tank (1800 m³) and Raw water storage tank (500 m³) For Berrouaghia power Plant

Main contractor: Salpem

Owner: Sonelgaz (Algeria)

Year: 2006



Project: Design, Supply, Fabrication and Erection of 7 fuel oil and water storage tanks ((2*3000 / 2*2000 / 2*500 / 1*100) m³) for Ghannouch power plant

Main contractor: Alstom Power

Owner: Steg (Tunisia)

Year: 2009/2010



Project: Supply of 19 shop fabricated Tanks ASME stamped for Hadjret Ennous power plant (1200MW)

Main contractor: Snc Lavalin

Owner: Sonelgaz (Algeria)

Year: 2007



Project: Supply and Fabrication of 98 wind towers L777 H 65, 34 wind towers L780 HH80 and 16 main frame for Nacelle
Main contractor: Leitner Leitwind
Destination: Europe
Year: 2007 / 2014



Project: Fabrication of 128 wind towers AE61 55m (1,3MW)
Main contractor: Made - Gamesa
Destination: Tunisia
Year: 2010 -2011



Project: Supply, Fabrication and packing of 30 wind towers 65m 1MW
Main contractor: Vergnet
Destination: Ethiopia
Year: 2010



Project: Supply and Fabrication of The tallest flagpole in the world (H:170 m, Diam from 2,3 m to 4 m) located at Jeddah, KSA
Main contractor: Al Babtain-Le Blanc
Owner: Abdul Latif Jameel
Year: 2013 / 2014





Project: Design, Supply and Fabrication of 10 surge vessels (120 m³) for Mina Abdullah WDC II

Main contractor: ABB AG Power System Division

Owner: Ministry of Electricity & Water (Kuwait)

Year: 2013



Project: Supply, Fabrication and Delivery of 24 HP surge vessels 250 m³ for Wadi Tumallah surge area

Main contractor: VINCI Construction

Owner: Gmra (MMRA - Libya)

Year: 2006-2007



Project: Design, Supply, Fabrication and Delivery of 108 Anthracites & Sand filters for Skikda, BENI SAF and Honaine desalination plant (135m³; Length: 13m; Diam.: 3,7m)

Main contractor: GEIDA-UTE

Owner: AEC -Algerian Energy Company- (Algeria)

Year: 2006/2007/2008



Project: Design, Supply and Fabrication of 8 surge vessels: 2 SV 90 m³ - 40 Bar // 3 SV 250 m³ - 25 Bar // 3 SV 225 m³ - 25 bar for MAO project.

Main contractor: ABB AG Power System Division

Owner: Agence Nationale des Barrages et Transferts « ANBT » (Algeria)

Year: 2009



Project: Design, Supply and Fabrication of 20 surge vessels for Setif –Hodna pumping stations.

Main contractor: Mapa Construction And Trading CO, INC.

Owner: Agence Nationale des Barrages et Transferts « ANBT » (Algeria)

Year: 2011



Project: Design, Supply, Fabrication and Delivery of 10 Sand filters for Almanzora desalination plant (Diam: 3,8 m; length: 20 m).

Main contractor: Befesa

Owner: ACUAMED -Sociedad Estatal Aguas de las Cuencas Mediterráneas- (Spain)

Year: 2008



Project: Design, Supply, Fabrication & Erection of 10 Surge pressure Vessels, steel pipe spools and fitting for booster pump stations for Rejma Ghut Essoltan and Benghazi Plain project.

Main contractor: Kolin

Owner: GAMRWUA (AMRWUA - Libya)

Year: 2010 / 2011



Project: Supply, Fabrication and Delivery of 165 tank filters 50 m³ and 54 backwash tanks 70m³ along with 1400 T of galvanized supporting steel structures.

Main contractor: Idreco S.p.a

Owner: GMMIRA (MMRA - Libya)

Year: 2002



Project: Supply, Fabrication, Delivery of steel manifold, piping spools, special fittings, surge vessels, miscellaneous steel works and mechanical installation of pumping stations PS1 & PS2 (TAZ project)

Main contractor: Metis

Owner: GMMRA (MMRA - Libya)

Year: 2006-2007



Project: Supply and fabrication of 32 special fittings (Diam:40m; length:7.5m) for the twin SARIR to ADJDABIA conveyances

Main contractor: AL NAHER CO.LTD pipe manufacturing

Owner: GMMRA (MMRA - Libya)

Year: 2004



Project: Design, Supply, Fabrication and Site Erection of steel pipes and fittings equipment for The KUFRA Conveyance line (flow control/regulating stations) 2 000 T.

Main contractor: Tekfen - TML - JV

Owner: GMMRA (MMRA - Libya)

Year: 2008/2010



Project: Supply, Fabrication and Delivery of 15 surge vessels (250 m³), manifolds, fittings and complete mechanical installation of AG and GAG pumping stations at Sirt

Main contractor: ABB Utilities-Metis

Owner: GMRWUA (MRWUA - Libya)

Year: 2006/2007



Project: Supply, Fabrication and Installation of steel Process equipment for phosphoric acid plant (360 000T/Year P2O5) in Skhira-Tunisia (49 vessels for concentration unit (850 T) and 18 vessels for diluted acid unit (200T)

Main contractor: Socomenin / Wec (JV)

Owner: Tifert -Tunisian Indian Fertilizers Company- (Tunisia)

Year: 2008/2010



Project: Supply, Fabrication Delivery and Erection of convertor, towers and stack for new sulfuric acid plant at Mdhilla II - Tunisia

Main contractor: ECEC

Owner: GCT Group Chimique Tunisien (Tunisia)

Year: 2012/2014



Project: Supply, fabrication and Installation of steel process equipment for new phosphoric acid plant at Mdhilla II - Tunisia on EPC basis

Main contractor: Socomenin / Hyundai Eng / SBF

Owner: GCT Group Chimique Tunisien (Tunisia)

Year: 2010 - 2015



Project: Mechanical and steel erection works of rotary kiln and raw mill at Carthage Cement Plant (Djebel Ressas)

Main contractor: Ekon

Owner: Carthage Cement (Tunisia)

Year: 2011 - 2012



Project: Engineering, Fabrication and Construction of new STACKER (4000T/hour) and RECLAIMER (1000T/hour) machines and expansion of the present pellet stock yard

Main contractor: Socomenin

Owner: LISCO -Libyan Iron & Steel Company- (Libya)

Year: 2009/2010



Project: Design, Supply, and Erection of exchangers with all underground piping for new cooling unit (Pipes Diam 1600, 90 and 70 m)

Main contractor: Socomenin

Owner: LISCO -Libyan Iron & Steel Company- (Libya)

Year: 1995

Customer Satisfaction Objectives

We are committed to delivering high quality products and services, on time, and with the lowest possible cost, to the delight and satisfaction of our customers.

In order to achieve these objectives, we will :

- » Perform timely and effective preventive and corrective actions on identified or potential problems throughout the business.

- » Work with our suppliers and subcontractors to make sure their products/ services meet the same high standards that we set for ourselves.

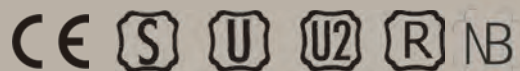
- » Strive to continuously improve the cost effectiveness of all our functions and processes.

- » Assure that there is a clear understanding of the customers' needs and expectations.

- » Adopt a quality-in-all-we-do philosophy and recognize each employee's responsibility for quality.

- » Work to defined policies, procedures, and processes with an emphasis on continuous process improvement through individual and group contributions; customer, user, and subcontractor input as well as process and product measurements.





www.socomenin.com.tn

Tunisia

SOCOMENIN - Head Quarter

Avenue Mohamed Hedi Khefacha 3000 Sfax - TUNISIA

Phone: (+216) 74 101 100 - 74 498 162

Fax : (+216) 74 497 726 - 74 497 438

E-mail: marketing@socomenin.com.tn

industrial@socomenin.com.tn

Libya

SOCOMENIN - Branch office

Essaraj area - Tripoli - LIBYA

Phone: (+218) 21 719 4411 - 21 719 0300

(+218) 21 719 0200 - 21 489 2213

Fax: (+218) 21 489 2213

e-mail: tripoli@socomenin.com.tn

Algeria

SOCOMENIN - Branch office

Phone: (+213) 661 58 69 80

(+213) 560 94 19 23

e-mail: filiale-algerie@socomenin.com.tn